

RMR-Railway Product Brochure

CONTENT

1 RAILWAY PRODUCT

TURNOUT	01
CROSSING	10
FASTENING SYSTEM	12
CLIP	14
BASE PLATE	15
FISHPLATE	16
RAIL	17
SLEEPER	20
BUFFER STOP	22
OTHER SPARE PARTS	23
OTHER PRODUCTS	24

2 OTHER STEEL STRUCTURE PRODUCT

STEEL STRUCTURE CONSTRUCTION	25
POWER TRANSMISSION TOWER	27

3 URBAN RAIL TRANSIT

MAGLEV TRANSPORTATION	29
MONORAIL TRANSPORTATION	34
SUSPENDED TRAFFIC SYSTEM	36
TOURISM AND SIGHTSEEING LIGHT RAIL SYSTEM	39

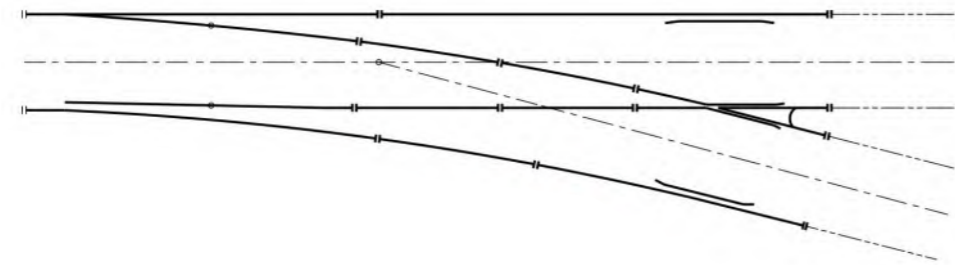
4 LIFTING MACHINERY PRODUCTS

LIFTING MACHINERY PRODUCTS	40
----------------------------------	----

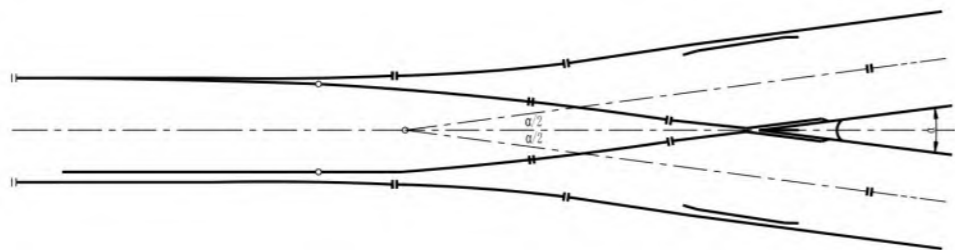
RAILWAY PRODUCT

TURNOUT

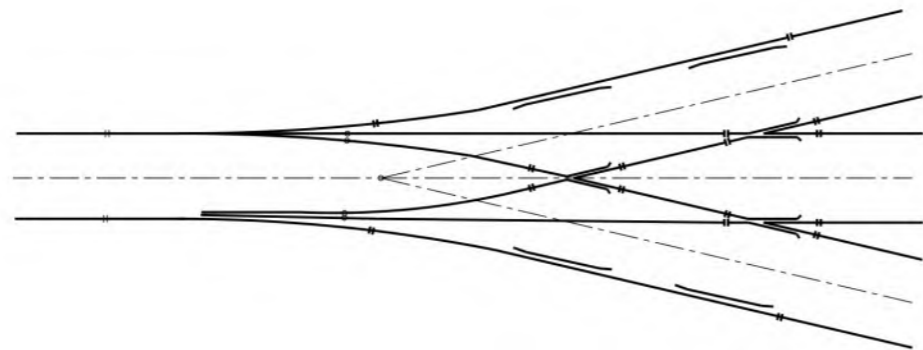
Note: It can be customized and adjusted according to customers' requirements or design.



Simple Turnout



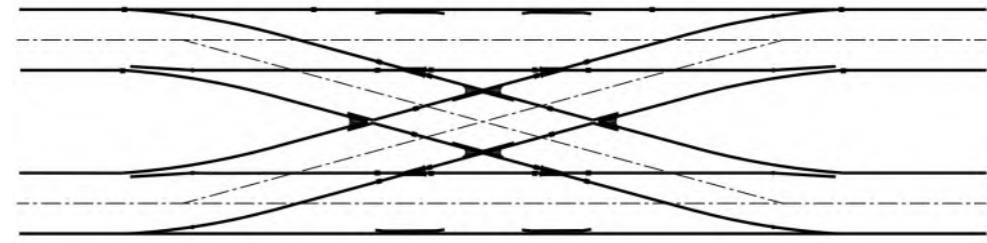
Equal Split Turnout



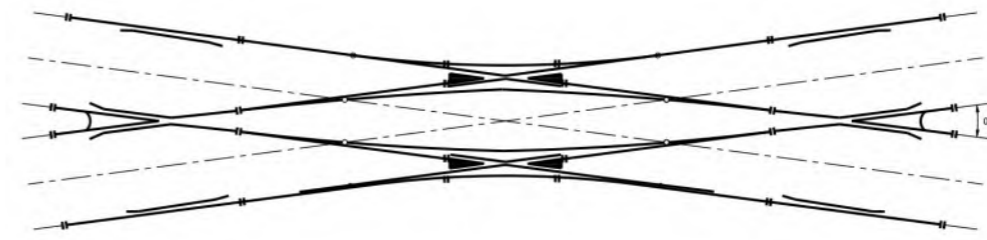
Three-throw Turnout



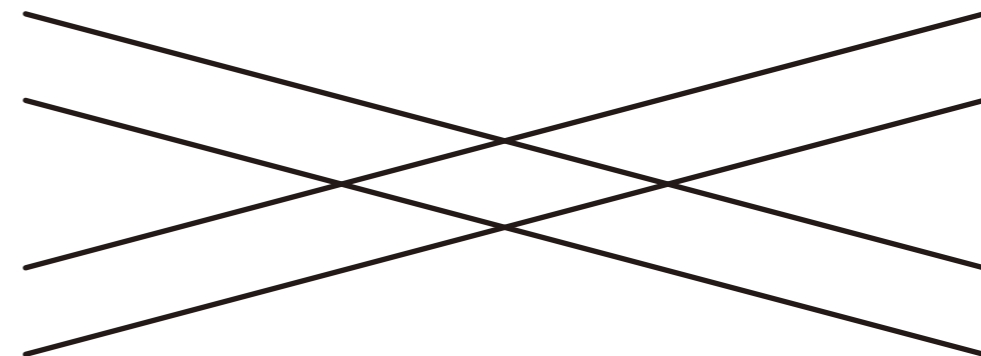
Single Crossover



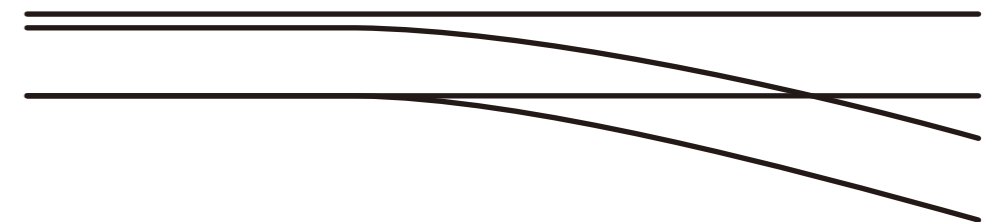
Scissors Crossover



Double Slip Turnouts



Diamond Crossing



Mixed Gauge Turnout



Rail Expansion Joint



60kg/m Rail 1:42 Simple Turnout for 350km/h Passenger Dedicated Line (Ballastless)



60kg/m Rail 1:18 Simple Turnout for 350km/h Passenger Dedicated Line (Ballastless)



60kg/m Rail 1:18 Simple Turnout with Fixed Crossing



60kg/m Rail 1:12 Simple Turnout with Moveable Crossing Exported to Laos



UIC60 1:18 Turnout for 220km/h High Speed Line Exported to Venezuela



CHN60 1:12 High Speed Turnout for Guangzhou-Shenzhen-Hongkong PDL (Hongkong MTR)



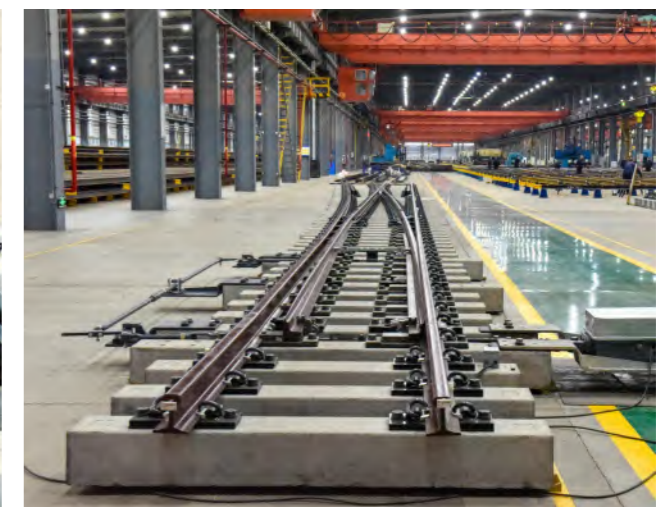
60kg/m Rail 1:12 Type II Speed-up Simple Turnout



54E1 Rail 1:8/1:12/1:16 Simple Turnout Exported to Pakistan



54E1 Rail 1:8/1:10/1:12/1:16 Simple Turnout Exported to Thailand



54E1 Rail 1:9/1:12/1:15 Simple Turnout with Back-drive Exported to Malaysia

High Speed Turnout

Application	Passenger Dedicated Line, Mainline
Track	CWR Line, Ballasted, Ballastless
Standard	EN, UIC, BS, AREMA, JIS, SRT, TB
Rail type	60kg/m, 75kg/m; P65, UIC54, UIC60, 54E1, 60E1, 115RE, 132RE, 136RE, etc.
Passing speed in straight track	(1) passenger transport: 350km/h, 250km/h, 200km/h; (2) freight transport: 120km/h
Axle load	(1) passenger transport: 17t; (2) freight transport: 23t, 25t
Track gauge	1435mm



BS100A 1:10 Simple Turnout
Exported to Thailand



BS500 1:8.5 Simple Turnout
Exported to Uganda



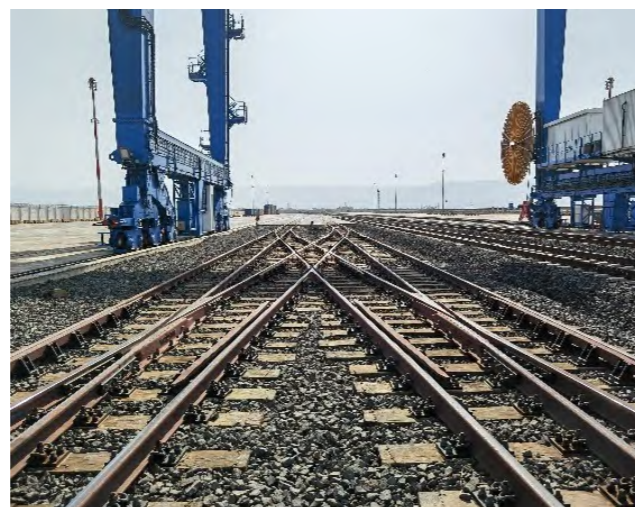
54E1 Rail 1:10/1:12 Simple Turnout
Exported to Indonesia



BS80R Rail 1:8.5/1:12 Simple Turnout
Exported to Uganda



54E1 Rail 1:8/1:10 Diamond
Crossing Exported to Indonesia



43kg/m Rail 1:9 Scissors Crossing
with 4.4m Space Exported to Kenya

Ordinary Speed Turnout	
Application	Passenger Line, Passenger& Freight Mixed Line
Track	CWR Line, Jointed Line, Ballasted, Ballastless
Standard	EN, UIC, BS, AREMA, JIS, SRT, TB
Rail type	38kg/m, 43kg/m, 50kg/m, 60kg/m, 75kg/m; P65, UIC54, UIC60, 45E1, 54E1, 60E1, JIS50, BS75R, BS80A, BS90A, BS95N, BS100A, 90RA, 90RE, 100RA, 100RE, 110RE, 115RE, 132RE, 136RE, AS50, AS60, AS68, 59R2, 60R2, KS50, KS60, etc.
Passing speed in straight track	160km/h, 120km/h, 100km/h, 90km/h, 80km/h
Axle load	17t, 20t, 23t, 25t
Track gauge	1000mm, 1067mm, 1435mm, 1520mm, 1676mm, etc.



60kg/m Rail 1:7 Double Slip Turnout
For Industry & Mining & Special Railway Line



38kg/m Rail 1:4 Simple Turnout
Exported to Laos

Mining Turnout	
Application	Mining, Factory
Track	Jointed Line, Ballastless, Ballasted
Standard	EN, TB, MT
Rail type	38kg/m, 43kg/m, 50kg/m, 54E1, etc.
Passing speed	≤30km/h
Axle load	20t
Track gauge	1435mm, etc.



60kg/m Rail 1:18 Simple Turnout with Fixed Crossing for Heavy Haul Railway



115RE Rail 1:15/1:20 Simple Turnout for Heavy-haul Railway Exported to Mexico



60E1 Rail 1:9/1:12/1:20 Simple Turnout for Heavy-haul Railway Exported to South Africa



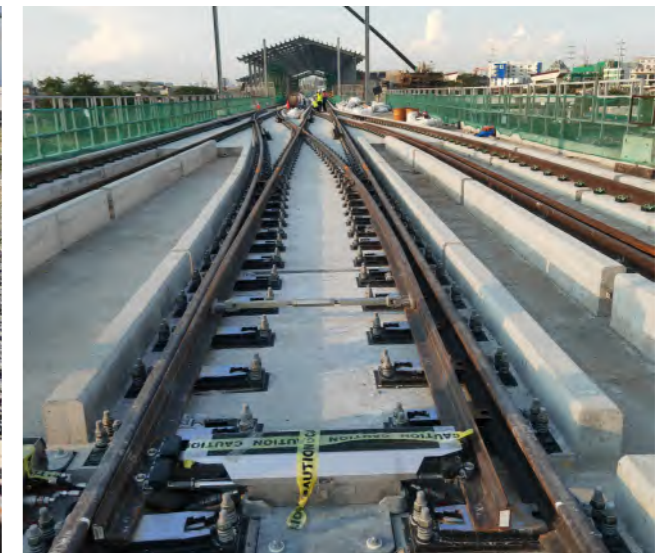
60kg/m Rail 1:12 Metro Turnout



60E1 Rail 1:9 LRT Simple Turnout Exported to Nigeria



54E1 Rail 1:4 LRT Simple Turnout at Depot Exported to Philippines



54E1 Rail 1:9 LRT Simple Turnout at Mainline Exported to Philippines

Heavy Haul Turnout	
Application	Heavy Haul Line
Track	CWR Line, Jointed Line, Ballasted
Standard	EN, UIC, BS, AREMA, JIS, TB
Rail type	60kg/m, 75kg/m; P65, UIC60, 60E1, 115RE, 132RE, 136RE
Passing speed in straight track	200km/h, 160km/h, 120km/h, 100km/h, 80km/h
Axle load	27t, 30t, 32.5t, 35t, 40t, 45t
Track gauge	1067mm, 1435mm, 1520mm, 1676mm

Metro & LRT Turnout	
Application	Metro Line, LRT
Track	Jointed Line, Ballasted, Ballastless
Standard	EN, UIC, BS, AREMA, JIS, TB
Rail type	50kg/m, 60kg/m; P65, UIC54, UIC60, 45E1, 54E1, 60E1, 132RE, 136RE
Passing speed in straight track	≤80km/h
Axle load	17t
Track gauge	1435mm



59R2 Grooved Rail 1:6
Simple Turnout for Suburb Tramway



Shenzhen Longhua Tramway Turnout

Tramway Turnout	
Application	Tramway
Track	Jointed Line, Ballastless
Standard	EN, TB
Rail type	59R2, 60R2, 54G1, 54G2, etc.
Passing speed in straight track	≤30km/h
Axle load	12.5t, 14t
Track gauge	1435mm



54E1 Rail 1435mm Gauge One-way Expansion
Device for Suez Canal Ferdan Bridge



BMJ & REJ for Padma Main Bridge

Rail Expansion Device	
Application	Bridge, CWR line
Track	CWR Line, Jointed Line, Ballasted, Ballastless
Standard	EN, UIC, BS, AREMA, JIS, SRT, TB
Rail type	38kg/m, 43kg/m, 50kg/m, 60kg/m, 75kg/m; P65, UIC54, UIC60, 45E1, 54E1, 60E1, JIS50, BS75R, BS80A, BS90A, BS95N, BS100A, 90RA, 90RE, 100RA, 100RE, 110RE, 115RE, 132RE, 136RE, AS50, AS60, AS68, 59R2, 60R2, K550, K560
Passing speed in straight track	≤80km/h, ≤90km/h, ≤100km/h, ≤120km/h, ≤160km/h, ≤200km/h, ≤250km/h, ≤350km/h
Axle load	17t, 20t, 23t, 25t, 27t
Track gauge	1000mm, 1067mm, 1435mm, 1520mm, 1676mm, etc.

RAILWAY PRODUCT

CROSSING



Solid Manganese Steel Self
Guarded (SMSG) Frog



Rail Bound Manganese Steel (RBM)
Frog Insert



Rail Bound Manganese
Steel Frog



Leap-over High Manganese
Steel Bolted Crossing



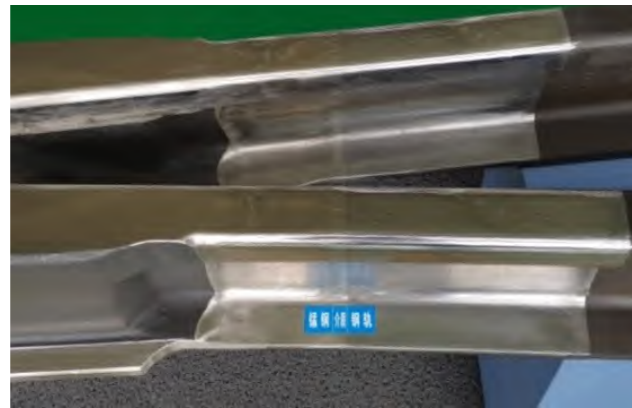
CMS Explosive Depth
Hardness Crossing



Alloy Steel Crossing



Forged High Manganese Steel Crossing



CMS Crossing with Flash Butt Welding Legs

Crossing	
Mode	Cast Manganese Steel (CMS), Rail-Bound Manganese (RBM), Explosive Depth Hardness (EDH), Flash Butt Welding, Movable Crossing, Alloy Steel Crossing
Track	CWR Line, Jointed Line
Standard	EN, UIC, BS, AREMA, JIS, SRT, TB
Application type	<p>China: 38kg/m, 43kg/m, 50kg/m, 60kg/m, 75kg/m; 59R2, 60R2 series crossing</p> <p>USA: Cast Manganese Steel (CMS), Solid Manganese Steel Self Guarded (SMSG), Rail Bound Manganese Steel (RBM), Explosive Depth Hardness (EDH), Flash Butt Welding, Movable Crossings/Frogs, 90RA SMSG Series Frogs, 100RA SMSG Series Frogs, 110RE SMSG Series Frogs, 115RE SMSG/RBM Series Frogs, 132RE SMSG/RBM Series Frogs and 136RE SMSG/RBM Series Frogs</p> <p>South Korea 60Kg Series Crossings, 50Kg Series Crossings, 60E1 EDH Series Crossings</p> <p>Hong Kong: BS90A Series CMS Crossing, BS90A Series RBM Crossing, 54E1 Series CMS Crossing with flash butt welding legs, 60E1 Series CMS Crossing with flash butt welding legs</p> <p>Thailand: BS80A Series CMS Crossing with flash butt welding legs, BS100A Series CMS Crossing with flash butt welding legs, 54E1 Series CMS Crossing with flash butt welding legs</p>
Passing speed	≤80km/h, ≤90km/h, ≤100km/h, ≤110km/h, ≤120km/h, ≤160km/h, ≤200km/h, ≤350km/h
Axle load	≤20t, ≤25t, ≤30t, ≤40t, ≤45t

RAILWAY PRODUCT

FASTENING SYSTEM



Type	Axle Load	Running Speed	Clamping Force
W14HH	35 Tons	≤200km/h	≥10kN to EN 13146-7
E Type HH	40 Tons	≤80km/h	≥11kN to EN 13146-7
E 20 RA	≤180 kN	≤80km/h	≥11kN to EN 13146-7
China Type II	≤26 Tons	≤160km/h	≥10KN to EN 13146-7
C1 spring blade	≤26 Tons	≤80km/h	≥10KN to EN 13146-7
RN spring blade	≤26 Tons	≤80km/h	≥10KN to EN 13146-7
E 2055 WT	≤26 Tons	≤120km/h	≥12kN to AREMA spec.

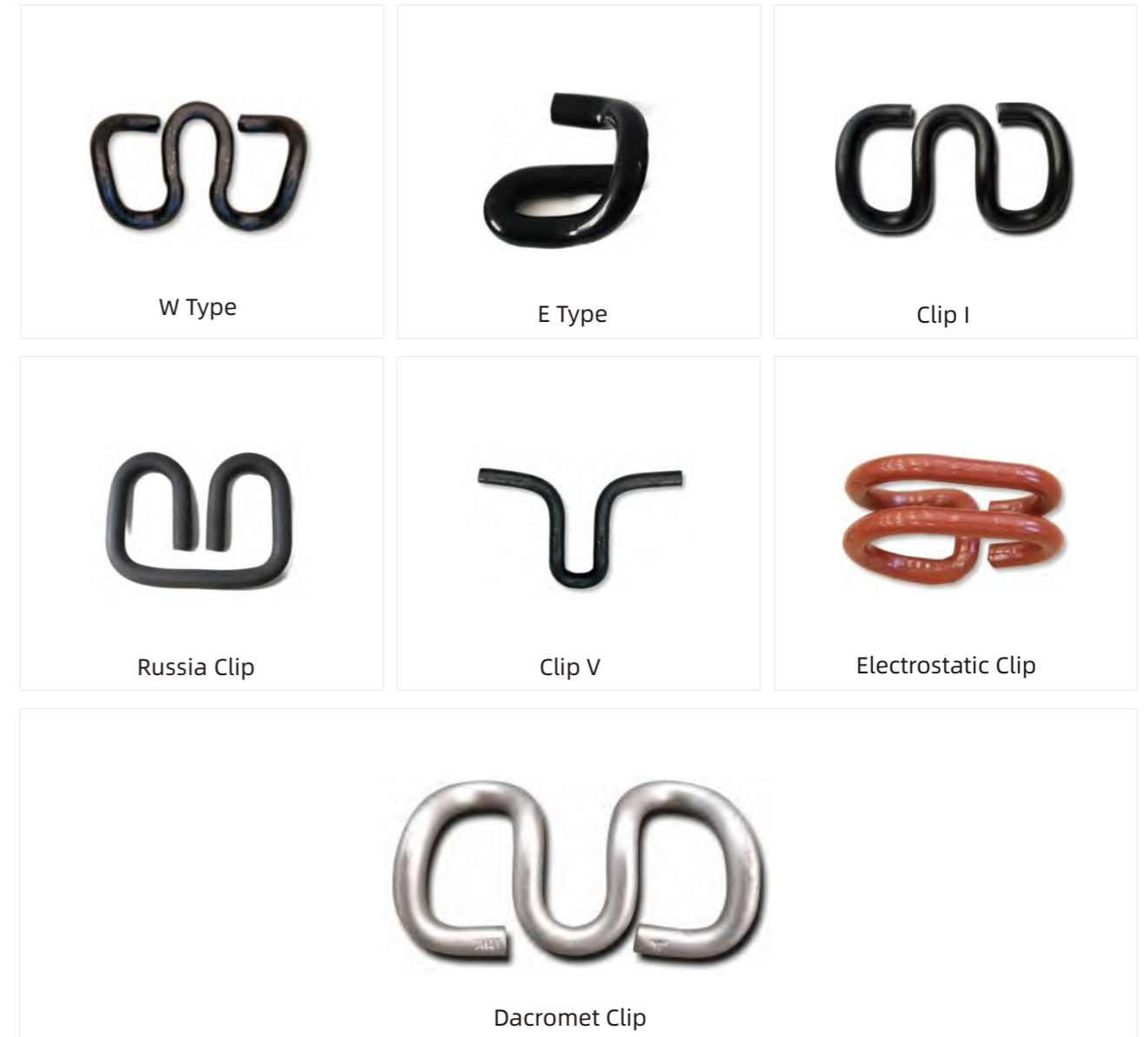
Note: All products can be customized and adjusted according to customers' requirements.

	W14HH Heavy Haul Rail Fastening	<ul style="list-style-type: none"> • 2 W14R Rail Clips • 2 Plastic Dowels • 2 Guide Plates • 2 Sleeper Screws
	E Type Heavy Haul Rail Fastening	<ul style="list-style-type: none"> • 2 E Type Rail Clips • 2 Cast In Shoulders • 2 Insulators • 1 Rail Pad
	E 20 Rail Anti-Vandal Rail Fastening	<ul style="list-style-type: none"> • 2 Rail Clips E20 Double Anti-vandal • 2 Cast In Shoulders • 2 Insulators • 1 Rail Pad
	Improved China Type II Rail Fastening	<ul style="list-style-type: none"> • 2 China Type II Rail Clips • 2 Steel Guide Plates • 2 Insulators • 2 Double Lead Anchor Bolts • 2 Hex Nuts • 2 Flat Washers • 1 Rail Pad • 2 Plastic Insert Dowels
	C1 Spring Blade Rail Fastening	<ul style="list-style-type: none"> • 2 Spring Blades • 2 Guide Plates • 2 Cam Bolt with Hex Nut and Washers • 1 Rail Pad
	RN Spring Blade Rail Fastening	<ul style="list-style-type: none"> • 2 RN Spring Blades • 2 Insulators • 2 Cam Bolt with Hex Nuts and Washers • 2 Insulated Bushings • 1 Rail Pad
	E 2055 Rail Fastening for wood tie	<ul style="list-style-type: none"> • 2 Rail E Clips E2055 • 4 Screw Spikes • 2 Insulators • 1 Base Plate

Our fastening systems have been widely used for ballasted and ballastless rails, as well as turnouts with concrete sleepers. Our products can fit in different types of technical standards, such as 45E1, 54E1, 60E1, 115RE, 136RE, Chinese 50 rail, Chinese 60 rail, EN standard, AREMA standard, DIN standard, BS standard, and other national standards.

RAILWAY PRODUCT

CLIP



Type	E Type, W Type and Customized Type
Material	60Si2Mn, 60Si2Cr and other material as per customer's requirements
Surface	Plain (oiled), Oxide black, color painting, HDG, Zinc Plating, etc.
Standard	EN standard, AREMA standard, DIN standard, BS standard and other national standard

RAILWAY PRODUCT

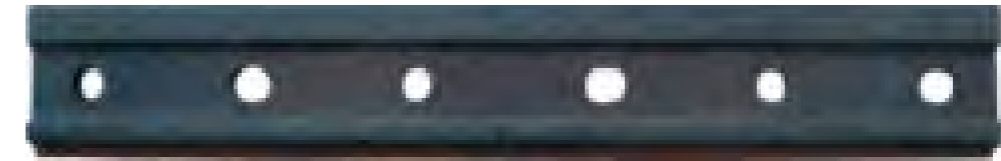
BASE PLATE



Type	Casting, Welding and Hot Forging
Material	Q235, QT400-15, QT450-10, QT500-7, QT600-3, QT700-2
Surface	Plain Oiled, Oxygen Black
Standard	EN standard, JIS standard, DIN standard and other national standard

RAILWAY PRODUCT

FISHPLATE



Fishplate



AREMA Fishplate



UIC Fishplate

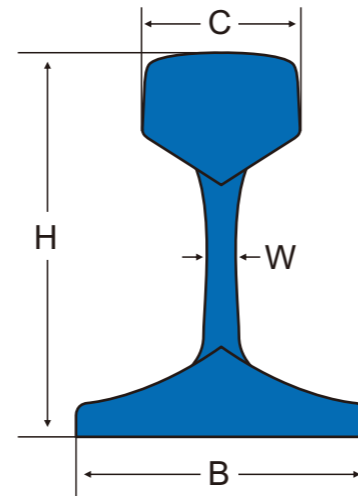


Compromise Fishplate

Type	43KG, 50KG, 60KG, 75KG, UIC60, UIC54, 115RE, 119RE, 132RE, 136RE, 141RE, BS75R, BS80A, BS80R, BS90A, BS100A, BS113A, FL10, FL14, FL18, FL20, FL30, FL33, FL41-49, FL41-54, TJ57, TJ ASCE 90, TJ UIC60, ARA-A 90LB, TJ45, 85 LB, 85 LB-80 LB
Material	Steel 45#, 50#, 55#, Q235
Tensile Strength	Rm : ≥785 Mpa, Rm : ≥690 Mpa, Rm : 550-650 Mpa, Rm : ≥375 Mpa
Holes design	4 holes, 6 holes and other requirements
Surface	Plain Oiled, Oxygen Black, Zinc Plated, Hot Dip Galvanized, Dacro coating
Standard	EN standard, AREMA standard, DIN standard, BS standard, UIC standard, and other national standard

RAILWAY PRODUCT

RAIL



TYPE OF RAIL	STANDARD	DIMENSIONS(mm)				Theoretical weight Kg/m
		H	B	C	W	
EUROPEAN STANDARD						
54E1 (UIC54)	EN 13674-1	140,00	70,00	16,00	54,77	159,00
54E2 (UIC54E)	EN 13674-1	125,00	67,00	16,00	53,82	161,00
60E1 (UIC60)	EN 13674-1	150,00	72,00	16,50	60,21	172,00
AUSTRALIAN STANDARD						
AS60	AS 1085.1	170,00	146,00	70,00	16,50	60,60
AS68	AS 1085.1	185,70	152,40	74,60	17,50	67,50
AMERICAN STANDARD						
90ARA-A (TR45)	AREMA	142.90	130.20	65.10	14.30	44.65
100 ARA-B	AREMA	143.30	130.66	67.50	14.30	49.64
100RE	AREMA	152.40	136.52	68.26	14.29	50.35
115RE (TR57)	AREMA	168.27	139.70	67.98	15.87	54.88
119RE	AREMA	173.03	139.70	67.47	15.87	58.86
132RE	AREMA	180.97	152.40	76.20	16.67	64.88
136RE (TR68)	AREMA	185.70	152.40	74.60	17.50	67.40
141AB	AREMA	188.91	152.40	77.79	17.46	69.74

TYPE OF RAIL	STANDARD	DIMENSIONS(mm)				Theoretical weight Kg/m
		H	B	C	W	
RUSSIAN STANDARD						
P50 (R50)	GOST	152,00	132,00	72,00	16,00	51,80
P65 (R65)	GOST	180,00	150,00	75,00	18,00	64,88
CHINESE STANDARD						
38KG	GB/T 2585	134.00	68.00	114.00	13.00	38.86
43KG	GB/T 2585	140.00	70.00	114.00	14.50	44.75
50KG	GB/T 2585	152.00	70.00	132.00	15.50	51.65
60KG	GB/T 2585	176.00	73.00	150.00	16.50	60.80
75KG	GB/T 2585	192.00	75.00	150.00	20.00	74.60
BRITISH STANDARD						
BS75R	BS 11-1985	128.59	61.91	122.24	13.10	37.20
BS80A	BS 11-1985	133.35	63.50	117.47	13.10	39.80
BS90A	BS 11-1985	142.88	66.67	127.00	13.89	44.10
BS95N	BS 11-1985	147.64	69.85	139.70	13.89	47.26
BS100A	BS 11-1985	152.40	69.85	133.35	15.08	50.18
JAPANESE STANDARD						
JIS 15KG	JIS 1103-91	79.37	79.37	42.86	8.33	15.2
JIS 22KG	JIS 1103-91	93.66	93.66	50.8	10.72	22.3
JIS 37A	JIS 1103-91	122.24	122.24	62.71	13.49	37.2
JIS 50N	JIS 1103-91	153	127	65	15	50.4
CR 73	JIS 1103-91	135	140	100	32	73.3
INDIAN STANDARD						
ISCR 50	ISCR	90	90	51.2	20	29.8
ISCR 60	ISCR	105	105	61.3	24	40
ISCR 70	ISCR	120	120	70	28	52.8

RAILWAY PRODUCT

SLEEPER

Concrete Sleeper



Type III A Sleeper



Type III C Sleeper



Type IV A Heavy-duty Sleeper



Short Sleeper



Haeco Sleeper



Crossing Sleeper



Subway Turnout Sleeper



Subway Sleeper



High-speed Rail Turnout Sleeper

Application

- Main line of a ballasted railway at a speed of 250km/h
- Railway bridge at a speed of 250km/h
- Railway bridge (pre-embedded nylon casing, environmental protection)
- Heavy-haul railway ballasted track at $\geq 30t$ axle load
- Turnout sleeper for ballast/ballastless railway and other customized requirement
- Track foundations of stackers and reclaimers in ports, mines, wharfs, etc.
- Level crossings of stations and freight yards

Standard

EN standard, AREMA standard, DIN standard, BS standard and other national standard

Standard	Steel Grade	Recommended Application
Railway Standard in China	U71MnG	High Speed Line
	U75VG	High Speed Line
	U71Mn	Straight Section of Common Line
	U75V	Straight Section of Passenger-freight Line and Heavy-haul Line
EN13674	R260	Common Line
	R350HT	Common Line, High Speed Line and Heavy-haul Line
	R350LHT	Common Line, High Speed Line and Heavy-haul Line
UIC860/BS	900A/900B	Common Line
AREMA	SS	Common Line
	HH	Common Line, High Speed Line and Heavy-haul Line
	LA	Common Line and High Speed Line
	LH	Common Line, High Speed Line and Heavy-haul Line
JIS	HH370	High Speed Line and Heavy-haul Line



Wooden Sleeper



Type	Hardwood, Softwood
Surface	Oil distilled from coal tar
Standard	EN standard, AREMA standard and other national standard
Dimension	As per customized requirements

Synthetic Sleeper



Type	Glass Fiber Reinforced Polyurethane Foaming Sleepers
Application	Turnout, main line, metro line and bridge
Key Parameters	1.Synthetic Sleepers with different specifications in a range of 600-1200 kg/m ³ ; 2.Ultimate pull-out force of railway thread spikes ≥ 60 kN; 3.None abnormality after 100,000 times in fatigue test; 4.Bending strength ≥ 70 MPa, bending modulus ≥ 6 GPa.
Standard	EN standard, JIS standard and other national standard
Dimension	As per customized requirements

RAILWAY PRODUCT

BUFFER STOP



Mode	Shock Absorber for Sliding (Spring Type), Fixed Type, Hydraulic Sliding Type, Hydraulic-Pneumatic Type, Hydraulic-Pneumatic Sliding Type, Hydraulic-Pneumatic Sliding Type (Duplex), Straddle Type, Fixed Hydraulic-Pneumatic Type
Maximum Impact Speed	≤10km/h, 5~15km/h, 10~20km/h, 15~25km/h, ≤25km/h
Maximum Bearing Impact Mass	120t, 200t, 210t, 336t
Kinetic Energy absorbed by one buffer	200kj, 228kj, 240kj, 260kj, 520kj
Maximum Sliding Distance	≤15m, ≤20m
Minimum Horizontal Resistance	280kN, 420kN, 500kN, 560kN
Application	Metro, Light track, High-speed track

RAILWAY PRODUCT

OTHER SPARE PARTS

Gauge Plate



Ordinary Type

Zincizing Type

Dacromet Type

Galvanized Type

Rubber Pad



Bolt & Nut



Galvanized Bolt

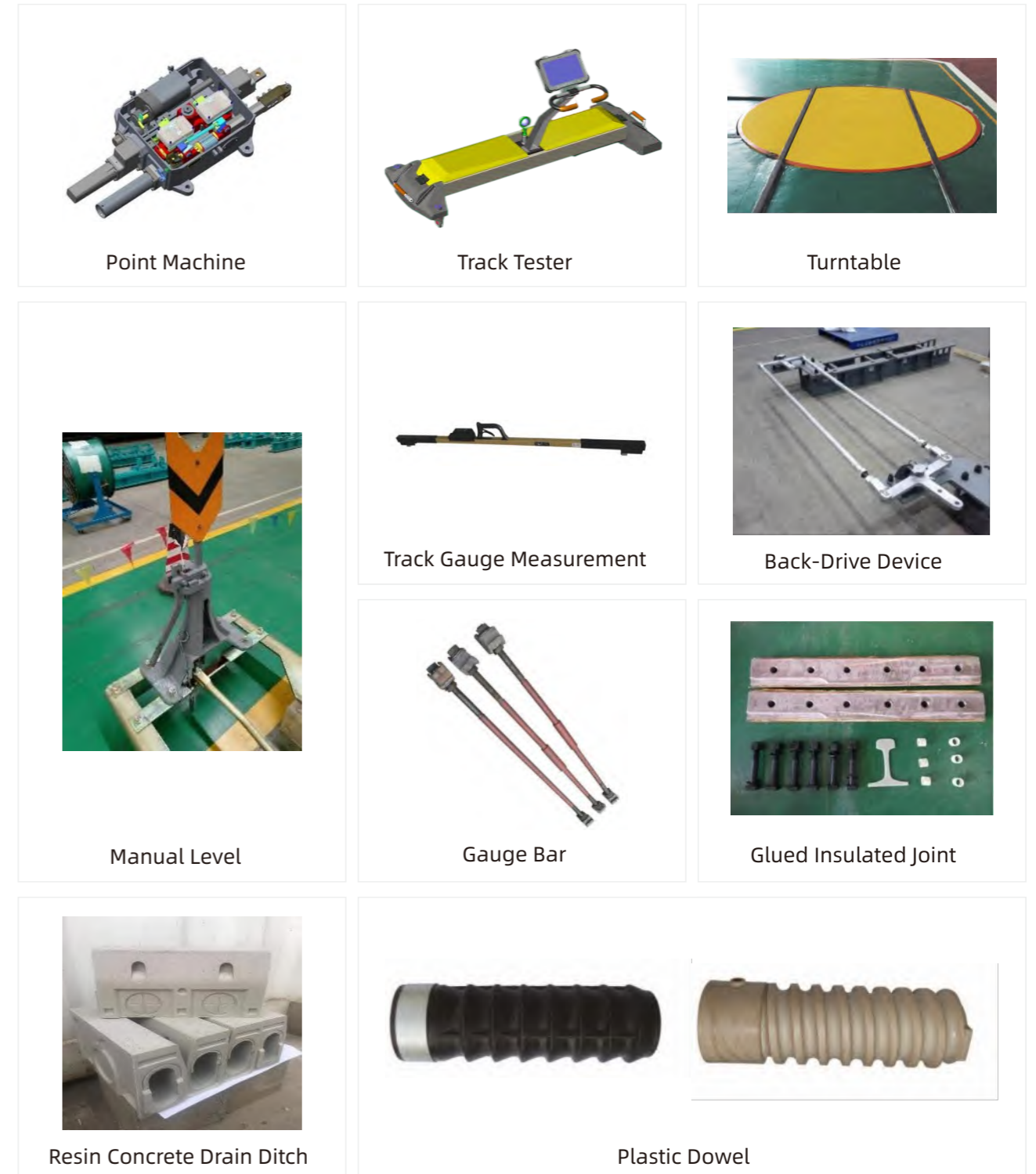
Galvanized Bolt

Nuts

Washers

RAILWAY PRODUCT

OTHER PRODUCTS



Point Machine

Track Tester

Turntable

Manual Level

Track Gauge Measurement

Back-Drive Device

Gauge Bar

Glued Insulated Joint

Resin Concrete Drain Ditch

Plastic Dowel

OTHER STEEL STRUCTURE PRODUCT

STEEL STRUCTURE CONSTRUCTION

RMR has achieved remarkable success in the field of construction steel structures, with its products widely used both domestically and internationally across various industries. Representative projects include high-rise building steel structure frames, Xi'an Samsung Semiconductor FBA Plant, Myanmar Danieli Metallurgical Equipment Steel Plant, and power generator steel structure frames.



Xi'an Samsung Semiconductor FBA Plant



Nanjing Baose Plant



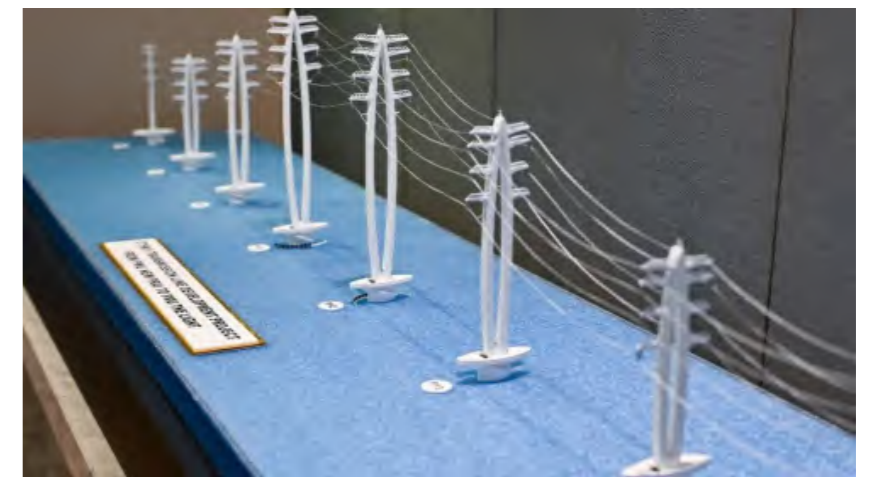
Power Generator Steel Structure Frames



Nanjing Metro Building

OTHER STEEL STRUCTURE PRODUCT

POWER TRANSMISSION TOWER



Malaysia Penang Power Transmission Tower

EN standard
Weight: 5,900t

URBAN RAIL TRANSIT

MAGLEV TRANSPORTATION



**BEIJING MAGLEV
S1 LINE**

- Length: 10km
- Designed speed: 100km/h

Medium and low speed maglev transportation

Medium and low speed maglev series turnout:

- Straight passing speed: 100km/h
- Lateral passing speed: 25km/h
- Switching time: 15s
- Length of maglev line track panels: 12.5m



HUNAN CHANGSHA MAGLEV EXPRESS LINE

- Length: 18km
- Designed speed: 100km/h



HUNAN FENGHUANG MAGLEV TOURISM LINE

- Length: 9km
- Designed speed: 100km/h

High Speed Maglev Transportation



QINGDAO HIGH SPEED MAGLEV TESTING LINE



High-speed maglev turnout

Typical Product

High-speed maglev turnout:

- Straight passing speed: 600 km/h
- Length: nearly 80 meters
- Width: nearly 3 meters
- Switch distance: nearly 4 meters

For the first time, reaching a straight passing speed of 600km/h, this is currently the fastest maglev turnout in the world. RMR has completed the design, manufacturing, and installation tasks of the project, and produced this single opening flexible turnout.



SHANGHAI MAGLEV DEMONSTRATION OPERATION LINE

- Length: 30km
- Designed speed: 500km/h

Relative Equipment



Medium and low speed maglev simple turnout



Medium and low speed maglev single crossover turnout



Manufacturing of maglev track panels



Medium and low speed maglev engineering vehicle

URBAN RAIL TRANSIT

MONORAIL TRANSPORTATION

CHONGQING STRADDLE MONORAIL TRANSIT

- Length: 98km
- Designed speed: 80km/h



Typical Products

Straddle type series turnouts

- Straight passing speed: 80km/h
- Lateral passing speed: 15km/h
- Single track switch time: 15s
- Four track switch time: 45s

Track beam tension bearings:

- Vertical reaction force: 1239KN
- Longitudinal horizontal force: 132KN
- Lateral horizontal force: 162KN
- Angle of turning $\geq 15^\circ$

Straddle type monorail engineering vehicles:

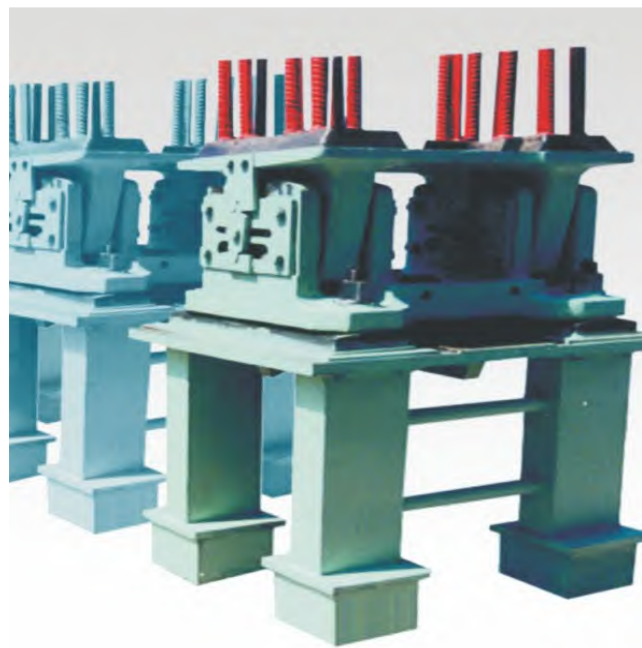
- Total vehicle weight: 14t
- Load capacity: 1t
- Running speed: 40km/h



Cross seat monorail transit joint type five way turnout



Joint type simple turnout for straddle type monorail transit



Straddle type monorail transit track beam support



Straddle type monorail engineering vehicle

URBAN RAIL TRANSIT

SUSPENDED TRAFFIC SYSTEM



EPC OPTICAL VALLEY AIR RAIL

- Length: 10.5km
- Designed speed: 60km/h

RMR has completed the production, on-site installation, and construction tasks for the project's track beams, steel structure piers, cover beams, supports, pins, expansion joints, turnouts, car stations, and large-span structural components.



DAYI AIR RAILWAY PROJECT

- Length: 1.4km
- Designed speed: 60km/h

RMR has completed the designing, manufacturing, and installation tasks of all track beams, columns, and turnouts.



XINGGUO SUSPENDED PERMANENT MAGNET MAGLEV TRACK TEST LINE

- Designed speed: 70km/h

Known as the "Red Rail", this rail transit aims to explore high-quality, customized, and intelligent transportation, dealing with complex terrain with medium to low carrying capacity.



Turnout of Zhongtang
Suspended Traffic System



Turnout of China Optical Valley
Suspended Traffic System



Suspended monorail
engineering vehicle

Typical products

Suspended series turnouts:

- Straight passing speed: 60km/h
- Lateral passing speed: 15km/h
- Single track switch time: 15s
- Weight: 7.5t
- Load capacity: 1.2t
- Running speed: 15km/h

URBAN RAIL TRANSIT

TOURISM AND SIGHTSEEING LIGHT RAIL SYSTEM



Xi'an Qujiang Tourist Light Rail Line

- Length: 10km
- Designed speed: 35km/h



Own Factory Area Tourism Light Rail System Test line

LIFTING MACHINERY PRODUCTS



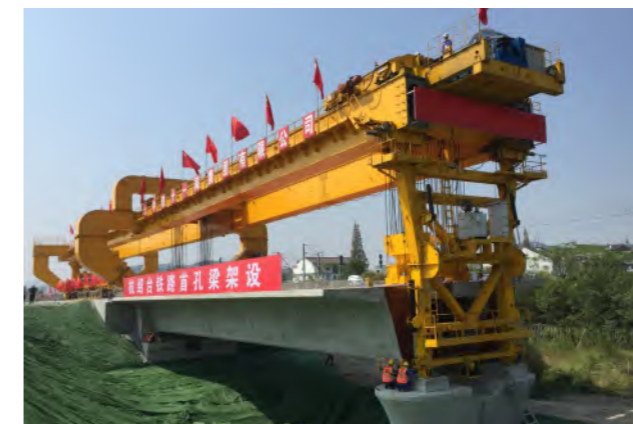
1100t double beam gantry crane

- Rated lifting capacity: 1100t
- Span: 24m
- Lifting height: 13m



Intelligent container gantry crane

- Rated lifting capacity: 40t
- Span: 13.2m
- Lifting height: 12.5m



900 ton bridge erecting machine

- Rated lifting capacity: 900t
- Span: 32m



500 ton beam lifting machine

- Rated lifting capacity: 500t
- Span: 34m
- Lifting height: 11m